

RESIDENTIAL SERVICES

Emergency Shelters (ES) / Kamala Homes (KH)

O'ahu - 808.754.9844

Hale Ho'opakele

O'ahu - 808.589.1829 Ext. 111

Hāloa House

Independent Living Program Training Home (ILPTH) Transitional Living Program (TLP)

O'ahu - 808.589.1829 Ext. 134

Kauhale 'Ōpio

O'ahu - 808.589.1829 Ext. 299

PREVENTION & OUTREACH SERVICES

Community-Based Outreach & Advocacy Programs (CBOA)

O'ahu & Kaua'i - 808.589.1829 Ext. 200

Guide On The Side (GOTS)

O'ahu - 808.265.0635

Ho'okala Attendant Care Program

O'ahu - 808.589.1829 Ext. 160

Independent Living Programs / Higher Education / Imua Kākou ('IHI)

Step-Up Housing & Foster Youth to Independence (FYI)

O'ahu - 808.589.1829 Ext. 233

Ka'i Like Program

O'ahu - 808.589.1829 Ext. 200 • Hawai'i - 808.969.1935

Kalihi Juvenile Assessment Center (KJAC)

O'ahu - 808.336.1573

Safe Place

O'ahu - 808.999.SAFE (7233) • Hawai'i - 808.959.5855

Transition & Aftercare Support Services (TASS)

O'ahu & Kaua'i - 808.589.1829 Ext. 200

Hawai'i & Maui - 808.969.1935

Wraparound Services

O'ahu - 808.589.1829 Ext. 200 • Hawai'i - 808.854.9032

Youth Outreach (YO!)

O'ahu - 808.942.5858

CLINICAL SERVICES

Expanded Crisis Support (ECS)

O'ahu - 808.589.1829 Ext. 400 • Hawai'i - 808.969.1935

Intensive In-Home Services (IHH) /

Intensive Independent Living Skills (IILS)

O'ahu - 808.589.1829 Ext. 400

Kaua'i - 808.589.1829 Ext. 200 • Hawai'i - 808.969.1935

Trafficking Victim Assistance Program (TVAP)

O'ahu, Kaua'i, Hawai'i Hotline - 1.888.398.1188

Transitional Family Homes (TFH)

O'ahu - 808.589.1829 Ext. 115 • Hawai'i - 808.969.1935

FAMILY SERVICES

'Ohana Resilience Support Services (ORSS) at Hale Kū Ola

O'ahu - 808.589.1829 Ext. 600

MISSION STATEMENT

Hale Kipa provides opportunities and environments that strengthen and encourage youth, their families and communities to actualize their potential and social responsibility.

Hale Kipa is a multi-service, fully accredited 501(c)(3) nonprofit agency that specializes in working with youth and their families who often have nowhere else to turn. Hale Kipa has served more than 74,000 youth throughout Hawai'i since its beginning in 1970 as a single shelter on O'ahu.

This includes working in partnership with public agencies and private organizations to provide residential, outreach, and foster care services at no cost. With programs that are flexible and responsive to changing needs, Hale Kipa supports youth involved in juvenile justice, behavioral health, education and child welfare. Program goals include stabilizing young people in crisis and helping youth and families build resiliency to experience success in their lives. Services are flexible, free, creative, and determined by the youth's and family's needs.

All persons are treated equitably and without favoritism, subject to limitations imposed by contractual obligations.



HALE KIPA

91-2128 Old Fort Weaver Road • 'Ewa Beach, HI 96706

T 808.589.1829 • F 808.589.2610

info@halekipa.org • www.halekipa.org



Aloha United Way
Kauai United Way
Hawaii Island United Way



Kalihi Juvenile Assessment Center

(ENGLISH VERSION)



HALE KIPA

Empowering Lives - One Youth At A Time

Kalihi Juvenile Assessment Center (KJAC)

Studies indicate that youth arrested for status offenses and minor law violations are at risk for further involvement with the juvenile justice system. The Kalihi Juvenile Assessment Center is a crucial step in the diversion and healing process that allows youth to have the opportunity to address their challenges, discover and cultivate strengths and positive relationships that can set the youth on a positive trajectory and prevent them from having an arrest record that requires Family Court intervention. To help prevent subsequent involvement with the justice system, Hale Kipa will assess youth needs and strengths and make referrals for a range of services. The proposed cultural component of the program further allows youth to become their own healers, role models for others, and more effective contributors to their families and communities.

Population and Eligibility Criteria

- Youth ages 17 years and younger.
- Youth given a civil citation by HPD with a status offense.
- Youth given a civil citation by HPD with an eligible first-time misdemeanor.
- Youth given a civil citation in HPD's District 5 (Kalihi) which spans Aliamanu to the Pali Hwy (West to East) and from the rim of the Ko'olau Range to the central southeastern shoreline of O'ahu (North to South).

Goal

Divert youth with eligible offenses from having contact with the court system, while providing targeted interventions and services to avoid or minimize further involvement in the justice system.

Services and Objectives

- Timely 24/7 response to Police referrals.
- Accept civil citation referrals.
- Triage services set in a safe environment informed using comprehensive assessments.
- Strategic, individualized case management.
- Warm hand-offs from the KJAC to other community resources.
- Opportunities that promote and improve family and community connections.
- Opportunities that strengthen prosocial skills.
- Participants in this program have a voice in the services they receive.

Youth and Family Responsibilities

- Participation in the development of an individualized service plan and personal goals.
- Participate in goal-specific program activities.

Discharge Criteria

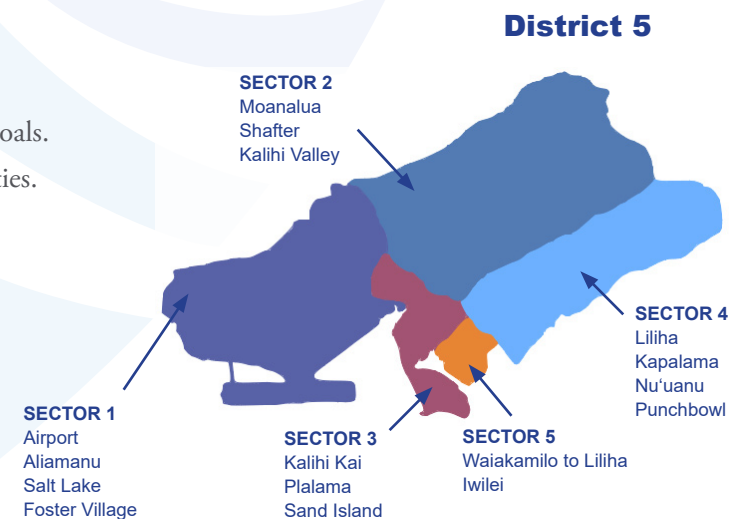
- Youth/family achieves goals and continues to be involved in the community and has no additional arrests.
- Youth cannot be located/is on the run, is disengaged, has not completed goals, or is refusing to participate in the program.
- Youth/family loss or no contact will result in a discharge.

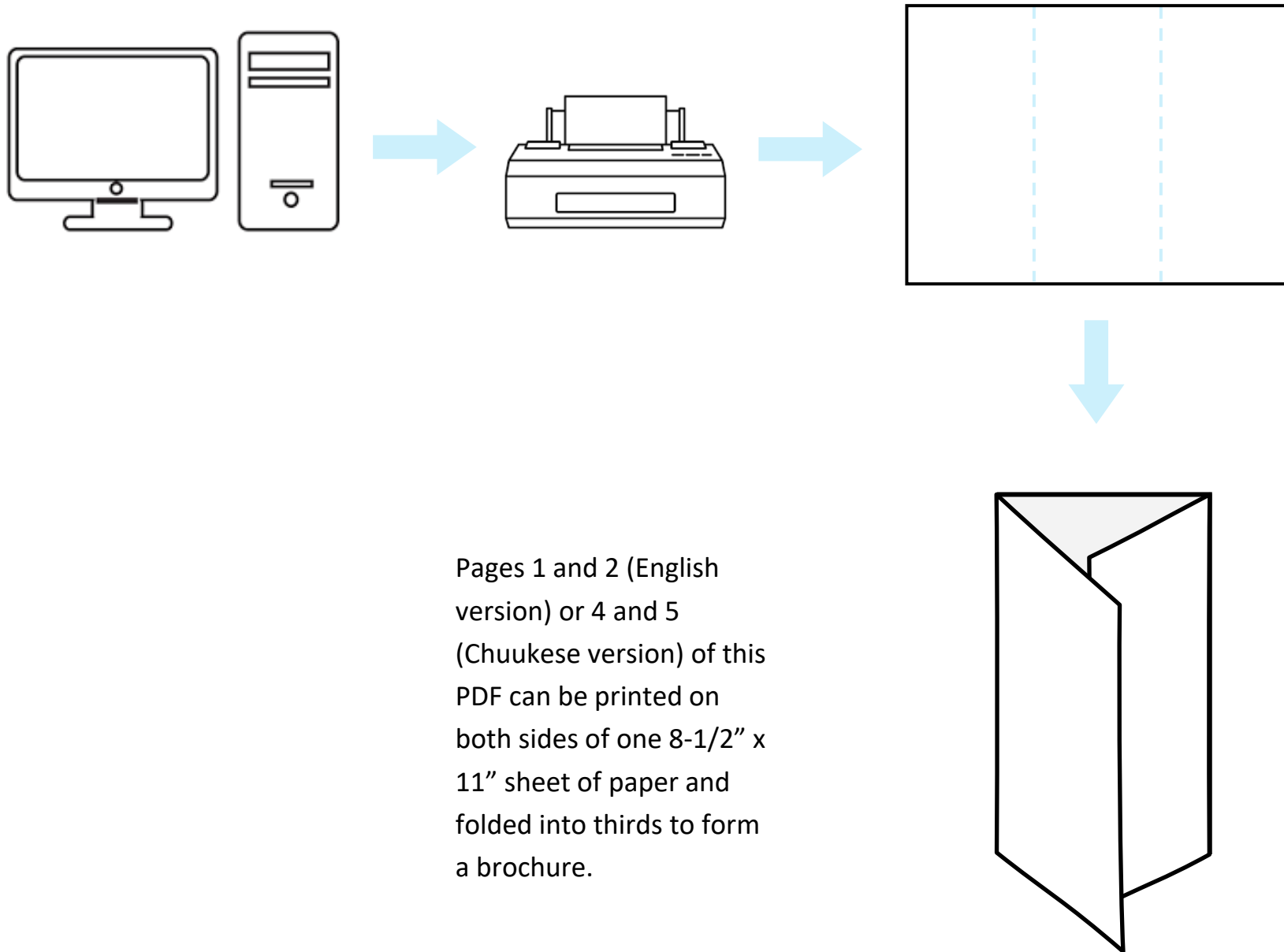
Aftercare and Follow Up

- Staff will make a follow-up call at 30 and 60 days post-discharge.
- Staff will determine if the youth has been rearrested since program discharge and if the youth and their family or legal guardian need any immediate service or linkage.

Contact Information

O'ahu - 808.336.1573





Pages 1 and 2 (English version) or 4 and 5 (Chuukese version) of this PDF can be printed on both sides of one 8-1/2" x 11" sheet of paper and folded into thirds to form a brochure.

RESIDENTIAL SERVICES

Emergency Shelters (ES) / Kamala Homes (KH)

O'ahu - 808.754.9844

Hale Ho'opakele

O'ahu - 808.589.1829 Ext. 111

Hāloa House

Independent Living Program Training Home (ILPTH) Transitional Living Program (TLP)

O'ahu - 808.589.1829 Ext. 134

Kauhale 'Ōpio

O'ahu - 808.589.1829 Ext. 299

PREVENTION & OUTREACH SERVICES

Community-Based Outreach & Advocacy Programs (CBOA)

O'ahu & Kaua'i - 808.589.1829 Ext. 200

Guide On The Side (GOTS)

O'ahu - 808.265.0635

Ho'okala Attendant Care Program

O'ahu - 808.589.1829 Ext. 160

Independent Living Programs / Higher Education / Imua Kākou ('IHI)

Step-Up Housing & Foster Youth to Independence (FYI)

O'ahu - 808.589.1829 Ext. 233

Ka'i Like Program

O'ahu - 808.589.1829 Ext. 200 • Hawai'i - 808.969.1935

Kalihi Juvenile Assessment Center (KJAC)

O'ahu - 808.336.1573

Safe Place

O'ahu - 808.999.SAFE (7233) • Hawai'i - 808.959.5855

Transition & Aftercare Support Services (TASS)

O'ahu & Kaua'i - 808.589.1829 Ext. 200

Hawai'i & Maui - 808.969.1935

Wraparound Services

O'ahu - 808.589.1829 Ext. 200 • Hawai'i - 808.854.9032

Youth Outreach (YO!)

O'ahu - 808.942.5858

CLINICAL SERVICES

Expanded Crisis Support (ECS)

O'ahu - 808.589.1829 Ext. 400 • Hawai'i - 808.969.1935

Intensive In-Home Services (IHH) /

Intensive Independent Living Skills (IILS)

O'ahu - 808.589.1829 Ext. 400

Kaua'i - 808.589.1829 Ext. 200 • Hawai'i - 808.969.1935

Trafficking Victim Assistance Program (TVAP)

O'ahu, Kaua'i, Hawai'i Hotline - 1.888.398.1188

Transitional Family Homes (TFH)

O'ahu - 808.589.1829 Ext. 115 • Hawai'i - 808.969.1935

FAMILY SERVICES

'Ohana Resilience Support Services (ORSS) at Hale Kū Ola

O'ahu - 808.589.1829 Ext. 600

MISSION STATEMENT

*Hale Kipa mei awora ekkoch pekin
amwokut epwe apochokuna me pesei serafo,
ar family me community epwe amari ar
kewe sinei me wiser mei auchea ngeni chò
me muu ika community.*

Hale Kipa ew putai, ese kamo nge a kawor monian seni federal 501(c)(3) mine a angang fan iten ekkew serafo me ar kewe family mine ir mei weires ia repwe kuna ekkoch aninisin emwen me pesepes fan iten mamaritan emon serafo. Hale Kipa a fen anisi ukukun 74,000 serafo non Hawaii poputa seni ewe ier 1970 non ewe fansoun ach ei imw mei chiwen chok kukkun me won O'ahu.

Ei mei pwan pachenong ach chiechi fengen me ekkewe ekkoch putai seni muun me ekkewe mei kamo fan iten ach sipwe anapano ach angang fan iten aramas, ach sipwe tori aramas sipwe anisir nge ese pwan kamo. Ren ekkei ekkoch putai iwe mei anapano me chumanuk fansoun epwe wor akasiwin, Hale Kipa mei emweni serafo ir mei turunong non tipisin atai annuk, osukosuken nonomun inis, sukun me oechun nonomun won ei fonu. Ach anean pwe sipwe apachanong mamaritan serafo repwe tou seni ewe sokkun osukosuk ra nom non me anisir fan iten ar family epwe pochokun me nonomoeh won ei fonu. Ekkei pekin anisi aramas mei mecheres me ese kamo pwan pochokun fan iten nonomun ewe serafo me an ewe family osupwang.

Kich mei achocho ngeni pwe sipwe anisi sakopaten aramas ese nifinin, sise kefin ion sipwe anisi me sise aimuni ach angang fan iten ekkoch.



HALE KIPA

91-2128 Old Fort Weaver Road • 'Ewa Beach, HI 96706

T 808.589.1829 • F 808.589.2610

info@halekipa.org • www.halekipa.org



Aloha United Way
Kauai United Way
Hawaii Island United Way



Kalihi Juvenile Assessment Center

(CHUUKESE VERSION)



HALE KIPA

Empowering Lives - One Youth At A Time

Kalihi Juvenile Assessment Center (KJAC)

Napengeni ekkewe serafè ra pachenong non kapung pokiten ir mei wonò ren police me wor ar tikingaw ren ar atai annuk. Ei Kalihi Juvenile Assessment Center ew kinikin a tongeni tukonongi an epwe aninis non ei pekin fan iten ekkewe serafè me amenefichi an epwe wor fansoun ekkewe serafè repwe tongeni aporoua ar kewe nipwakingaw pwe epwe wor aninisin akasiwin rer me epwe pwan anisir ar repwe niwiniti ika fori sefan met ewe ra fen fori mei mwirino. Ei epwe pwan anisir ar resapw chiwen pachenong non angangen kapung. Hale Kipa epwe aninis ngeni ekkewe mwokutukut epwe apochokuna me emwnir ika pwe repwe me pwan churi ekkoch program. Ei ekiék mei pesei ekkewe serafè ar repwe pwisin pochokun ne fori wiser fiti èèreni, pwan chon pisekin epiru ngeni ekkewe ekkoch, me chon echimwata me anisi family me community.

Ekkewe ra Tongeni Pachenong

- Ekkewe ra ier 17 me kukkunitiw.
- Ekkewe ra angei nour taropwen paking seni HPD ika police ren ar atai annuk.
- Ekkewe ewin ar angei nour taropwe seni HPD fan iten atai annuk nge mei kisikis tipisin.
- Ekkewe ir mei nom non ewe kinikin ren Kalihi ra kan aita ngeni HPD District 5 (West ngeni East) me pwan ekkoch kinikin non Ko'olau Range tori pwan ekkoch kinikin mei pachenong central south arosetin ei fonu O'ahu (North to South).

Met Sipwe Anganga

Sipwe achocho ne epeti pwe ewe serafè esapw pachenong non ewe angangen kapung me nom non repotun kapung, ren ach sipwe awora ekkoch mwich me angangen aninisin emwen pwe epwe akukunatiw an ewe emon epwe nom non mwokutun kapung.

Amwokut me Kòkòt

- Kich mei suk 24/7 ach sipwe ponuwani an Police tiitiito ika kèèkèè nupwen emon a onòò.
- Sipwe angei ika etiwa ewe taropwe epwe tori kich.
- Ach angang won ei pekin epwe mònomònonòò espaw pwa ngeni ekkoch.
- Sipwe fiti pungun tetenin angang, sipwe fori noun taropwe an epwe tongenir pachenong kokotun non ach angang.
- Sipwe pwan tungor ekkoch aninisin emwen seni ekkoch putai ika mei auchea me nukun ach ei KJAC.
- Ekkoch amwokut epwe pwan anisi mamaritan anisi family me community.
- Ekkoch amwokut epwe apochokuna me anisi ewe emon epwe sinei eochu angang.
- Ewe aramas mei wor an puung epwe pwan wanong mefan mei auchea.

Wisen Ewe Serafè me Family

- Mei auchea repwe achocho aponuweta met wiser me non ewe amwokut ika kòkòt.
- Fiti ekkewe mwokutukut mei fis mei-afat pwe mei auchea me non ewe program.

Annukun Kòòtou

- Serafè/family repwe aponuweta me sopweno ne fiti ika pachenong non mwokutukutun community me ese chiwen wor mei onòò ren police.
- Ewe serafè ese tongeni epwe nom ekis/ika suno ekis, ese awesi met epwe fori, ika ese chiwen mochen epwe fiti ekkewe mwokutukut.
- Ewe serafè/family rese chiwen ponuwani me tour ngeni ach mwokutukut ir repwe pwan tongeni tou seni ei aninis.

Mwirin me Koko Sefan

- Emon chon angang epwe koko mwirin 30 me 60 raan mwirin an tou seni ei program.
- Ewe chon angang epwe kuta porousan ika ewe serafè mei onòò sefan ren police nge ika ewe family me armaasan ir mei mnei epwe wor chon anisir mei atapwanapwan.

Nampan Ach Ofes

O'ahu - 808.336.1573

