

## RESIDENTIAL SERVICES

### Emergency Shelters (ES) / Kamala Homes (KH)

O'ahu - 808.754.9844

### Hale Ho'opakele

O'ahu - 808.589.1829 Ext. 111

### Hāloa House

### Independent Living Program Training Home (ILPTH) Transitional Living Program (TLP)

O'ahu - 808.589.1829 Ext. 134

### Kauhale 'Ōpio

O'ahu - 808.589.1829 Ext. 299

## PREVENTION & OUTREACH SERVICES

### Community-Based Outreach & Advocacy Programs (CBOA)

O'ahu & Kaua'i - 808.589.1829 Ext. 200

### Guide On The Side (GOTS)

O'ahu - 808.265.0635

### Ho'okala Attendant Care Program

O'ahu - 808.589.1829 Ext. 160

### Independent Living Programs / Higher Education / Imua Kākou ('IHI)

### Step-Up Housing & Foster Youth to Independence (FYI)

O'ahu - 808.589.1829 Ext. 233

### Ka'i Like Program

O'ahu - 808.589.1829 Ext. 200 • Hawai'i - 808.969.1935

### Kalihi Juvenile Assessment Center (KJAC)

O'ahu - 808.336.1573

### Safe Place

O'ahu - 808.999.SAFE (7233) • Hawai'i - 808.959.5855

### Transition & Aftercare Support Services (TASS)

O'ahu & Kaua'i - 808.589.1829 Ext. 200

Hawai'i & Maui - 808.969.1935

### Wraparound Services

O'ahu - 808.589.1829 Ext. 200 • Hawai'i - 808.854.9032

### Youth Outreach (YO!)

O'ahu - 808.942.5858

## CLINICAL SERVICES

### Expanded Crisis Support (ECS)

O'ahu - 808.589.1829 Ext. 400 • Hawai'i - 808.969.1935

### Intensive In-Home Services (IiH) / Intensive Independent Living Skills (IiLS)

O'ahu - 808.589.1829 Ext. 400

Kaua'i - 808.589.1829 Ext. 200 • Hawai'i - 808.969.1935

### Trafficking Victim Assistance Program (TVAP)

O'ahu, Kaua'i, Hawai'i Hotline - 1.888.398.1188

### Transitional Family Homes (TFH)

O'ahu - 808.589.1829 Ext. 115 • Hawai'i - 808.969.1935

## FAMILY SERVICES

### 'Ohana Resilience Support Services (ORSS) at Hale Kū Ola

O'ahu - 808.589.1829 Ext. 600

## MISSION STATEMENT

*Hale Kipa provides opportunities and environments that strengthen and encourage youth, their families and communities to actualize their potential and social responsibility.*

Hale Kipa is a multi-service, fully accredited 501(c)(3) nonprofit agency that specializes in working with youth and their families who often have nowhere else to turn. Hale Kipa has served more than 74,000 youth throughout Hawai'i since its beginning in 1970 as a single shelter on O'ahu.

This includes working in partnership with public agencies and private organizations to provide residential, outreach, and foster care services at no cost. With programs that are flexible and responsive to changing needs, Hale Kipa supports youth involved in juvenile justice, behavioral health, education and child welfare. Program goals include stabilizing young people in crisis and helping youth and families build resiliency to experience success in their lives. Services are flexible, free, creative, and determined by the youth's and family's needs.

All persons are treated equitably and without favoritism, subject to limitations imposed by contractual obligations.



# HALE KIPA

91-2128 Old Fort Weaver Road • 'Ewa Beach, HI 96706

T 808.589.1829 • F 808.589.2610

info@halekipa.org • www.halekipa.org

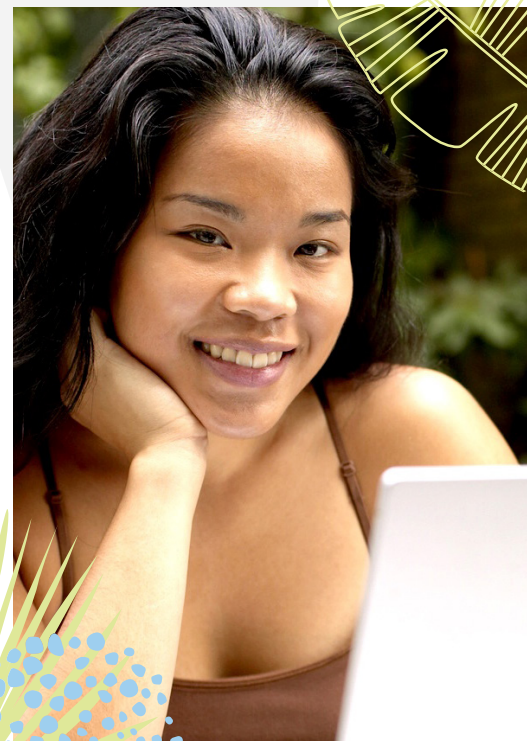


Aloha United Way  
Kauai United Way  
Hawaii Island United Way



Combined Federal Campaign

# Independent Living Programs



*"Anything is possible for a kid with the right amount of TLC. I love to think I got a lot of it and alot of it came from Hale Kipa. I would not be where I am today without them."*

*Bryan W.*



# HALE KIPA

Empowering Lives - One Youth At A Time

## Independent Living Programs

Hale Kipa's Independent Living Programs provide outreach services and residential programs for youth who are in or transitioning out of foster care, to prepare them for independent living. Services include skill building, higher education preparation and benefits, financial literacy, career exploration and employee readiness.

### Independent Living Program (ILP) Outreach

These services are for youth 12 through 27 who are learning soft skills and preparing for the transition out of care or learning to live after aging out of care.

Case Management provides individual support, assessment, skill building, and goal planning to assist youth and young adults in reaching their goals as they transition into adulthood and increase their independence.

### Imua Kākou (IK)

Imua Kākou (moving forward together) is a voluntary program from the Hawaii Department of Human Services that extends the services of foster care to young adults who turned 18 while in foster care. Services are offered until age 21. Hale Kipa provides case management services for this program on O'ahu.

O'ahu – 808.589.1829 Ext. 233

18 through 21) who were formerly in foster care or experienced homelessness to help them obtain education, employment and safe living arrangements.

## Hāloa House

Hāloa House is a residential program overseen by a live-in Resident Advisor, that provides skill-building services to young women (ages 18 through 24) who were formerly in foster care or experienced homelessness to help them obtain education, employment and safe living arrangements.

O'ahu – 808.589.1829 Ext. 134

### Independent Living Program Training Home (ILPTH)

Hale Kipa's Independent Living Program Training Home offers a home and skill-building services to youth or young men, ages 17 through 21, on parole or probation to help them obtain education, employment and safe living arrangements.

O'ahu – 808.589.1829 Ext. 134

### Step-Up Housing Program

Under the Family Unification Program, Step-Up Housing provides Housing Choice Vouchers to youth aging out of foster care. Housing assistance through Section 8 is awarded to young adults for a maximum of 36 months.

O'ahu – 808.589.1829 Ext. 233

### Population and Eligibility Criteria

Youth in the Hawaii Department of Human Services and persons with urgent needs or in emergency situations are given priority for service.

Participants are eligible if they are between the ages of 18 and 21 and meet one of the following criteria:

- Turned 18 or older while in foster care in Hawai'i and emancipated or "aged out" of the system
- Participant was placed in legal guardianship or adopted at age 16 or older from foster care in Hawai'i

Participants must also meet at least one of the following criteria:

- Be working on completing a high school diploma, GED or equivalent, or
- Enrolled part or full-time in post-secondary education (college) or vocational school, or
- Participating in an employment program, or
- Working at least part-time, 80 hours a month, or
- Be identified as medically disabled

### Admission Criteria

- Can function in community with minimal supervision
- Capable of employment
- Willing and able to participate in program activities
- No current drugs / alcohol use, violent behavior, criminal activity
- Not in psychiatric crisis

### Discharge Criteria

- Completion of goals / program
- Lack of participation
- Major rule violations in residential setting
- Youth terminates services
- Youth ages out of program

## Youth Responsibilities

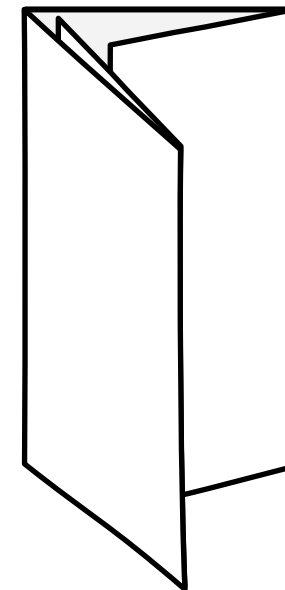
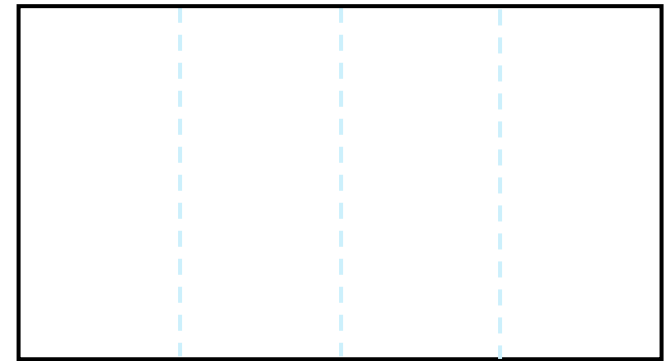
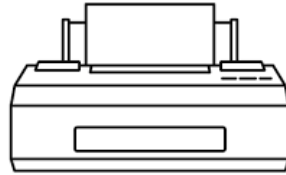
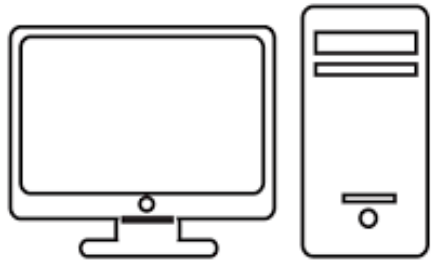
- Maintain eligibility by participating in a qualifying activity
- Input into case plan
- Participate in program and make progress toward skill attainment and personal goals

## Services

- Assessment / Personal Planning
- Individual Support
- Group Skill Sessions
- Outreach Activities
- Advocacy and Referral
- Information and Referral
- Foster Family Support
- Resource Caregiver
- Housing

## Skill Building

- Time Management
- Vocation / Career Development
- Education / Higher Education
- Employment Readiness
- Money Management
- Social Skills / Personal
- House Management
- Cooking
- Clothing Care
- Transportation
- Health
- Leisure Time
- Community Resources
- Parenting



Pages 1 and 2 of this PDF can be printed on both sides of one 8-1/2" x 14" sheet of paper and folded into quarters to form a brochure.