

PROGRAMS & SERVICES

Community-Based Outreach & Advocacy Programs (CBOA)

O'ahu & Kaua'i - 808.589.1829 Ext. 200

Emergency Shelters (ES) / Kamala Homes (KH)

O'ahu - 808.754.9844

Expanded Crisis Support (ECS)

O'ahu - 808.589.1829 Ext. 400 • Hawai'i - 808.969.1935

Guide On The Side (GOTS)

O'ahu - 808.265.0635

Hale Ho'opakele

O'ahu - 808.589.1829 Ext. 111

Hāloa House

O'ahu - 808.589.1829 Ext. 233

Ho'okala Attendant Care Program

O'ahu - 808.589.1829 Ext. 160

Housing First

O'ahu - 808.589.1829 Ext. 200

Independent Living Programs (ILP) / Imua Kākou (IK)

O'ahu - 808.589.1829 Ext. 233

Independent Living Program Training Home (ILPTH)

O'ahu - 808.589.1829 Ext. 200

Intensive In-Home Services (IIH) /

Intensive Independent Living Skills (IILS)

O'ahu - 808.589.1829 Ext. 400

Kaua'i - 808.589.1829 Ext. 200 • Hawai'i - 808.969.1935

Ka'i Like Program

O'ahu - 808.589.1829 Ext. 200 • Hawai'i - 808.969.1935

Kalihi Juvenile Assessment Center (KJAC)

O'ahu - 808.336.1573

'Ohana Resilience Services (ORS) at Hale Kū Ola

O'ahu - 808.589.1829 Ext. 600

Step-Up Housing & Foster Youth to Independence (FYI)

O'ahu - 808.589.1829 Ext. 233

Trafficking Victim Assistance Program (TVAP)

Hotline - 1.888.398.1188 (O'ahu, Kaua'i, Hawai'i)

Transition & Aftercare Support Services (TASS)

O'ahu & Kaua'i - 808.589.1829 Ext. 200

Hawai'i & Maui - 808.969.1935

Transitional Family Homes (TFH)

O'ahu - 808.589.1829 Ext. 400 • Hawai'i - 808.969.1935

Transitional Living Program (TLP)

O'ahu - 808.589.1829 Ext. 200

Wraparound Services

O'ahu - 808.589.1829 Ext. 200 • Hawai'i - 808.854.9032

Youth Outreach (YO!)

O'ahu - 808.942.5858

MISSION STATEMENT

Hale Kipa provides opportunities and environments that strengthen and encourage youth, their families and communities to actualize their potential and social responsibility.

Hale Kipa is a multi-service, fully accredited 501(c)(3) nonprofit agency that specializes in working with youth and their families who often have nowhere else to turn. Hale Kipa has served more than 74,000 youth throughout Hawai'i since its beginning in 1970 as a single shelter on O'ahu.

This includes working in partnership with public agencies and private organizations to provide residential, outreach, and foster care services at no cost. With programs that are flexible and responsive to changing needs, Hale Kipa supports youth involved in juvenile justice, behavioral health, education and child welfare. Program goals include stabilizing young people in crisis and helping youth and families build resiliency to experience success in their lives. Services are flexible, free, creative, and determined by the youth's and family's needs.

All persons are treated equitably and without favoritism, subject to limitations imposed by contractual obligations.



HALE KIPA

91-2128 Old Fort Weaver Road • 'Ewa Beach, HI 96706

T 808.589.1829 • F 808.589.2610

info@halekipa.org • www.halekipa.org



Aloha United Way
Kauai United Way
Hawaii Island United Way



REV 20240816.1403

Hale Ho'opakele



HALE KIPA

Empowering Lives - One Youth At A Time

Hale Ho'opakele

Our center is open to youth who are victims / survivors of commercial sexual exploitation and sex trafficking.

Our voluntary program accepts self referrals as well as referrals from Child Protective Services, Family Court, parents, police and youth agencies.

Self and parent referred residents will be expected to participate in family support services targeted towards reunification or other alternative arrangements. Youth and families are provided referrals to needed community services.

Population and Eligibility Criteria

- Youth is suspected/confirmed of being sexually exploited / trafficked
- Youth is 12 through 17 years old
- Physical and TB clearance
- Youth (and family) willing to comply with program expectations

Youth Responsibilities

- Respect people and property
- Participate in program activities
- Follow program responsibilities
- Participate in support services
- Attend an educational program

Services

- 24-hour nurturing, safe emergency shelter
- Basic needs
- Strength-based individual, group, and family support / stabilization services
- Educational support / services/classes
- Coordinating services with and meeting place for youth service providers

- Safety Plan development
- Structured, supervised and trauma-responsive living environment
- Skill building sessions/groups
- Recreational activities
- Nutritious meals
- Advocacy

Partners

- Kawaihoa Youth and Family Wellness Center
- Susannah Wesley Community Center
- Kealahou Services, a CAMHD program
- Child Welfare Services
- Office of Youth Services
- Ho'olā Na Pua
- Ola Hou Clinic
- Judiciary

Contact Information

Email – Leinani Yahiku at

lyahiku@halekipa.org

O'ahu – 808.589.1829 Ext. 111



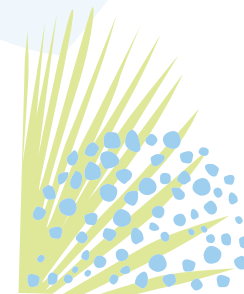
“We visited our daughter, she seemed comfortable and her color looks good.

I hope she continues to strive, to become a responsible individual.

This is a safe haven, to grow and heal. This is an answered prayer.

Thank you Hale Kipa for helping children in need.”

*Mahalo again,
Deborah*





Pages 1 and 2 of this PDF can be printed on both sides of one 8-1/2" x 11" sheet of paper and folded into thirds to form a brochure.